

Neuadd Albert | The Albert Hall

Llandrindod | Llandrindod Wells

Manylebau
Technegol

Technical
Specifications

Wedi'i ddiweddarau: Mai 2026

Updated: May 2026

Contents:

CONTENTS:	2
INTRODUCTION	3
SEATING CAPACITY	4
ACCESS	5
PARKING	5
STAGE INFORMATION AND DIMENSIONS	6
FLYING SYSTEM	8
DRAPERY (CURTAINS)	8
STAGE MANAGEMENT FACILITIES	9
STAGE POWER	10
ACCOMMODATION	11
LIGHTING	13
SOUND	16
PROJECTION	18
BAND FACILITIES	18
COMMS (CANS)	18
RELAY SYSTEM:	18
CAMERA SYSTEM:	19
RIGGING	20
FINDING THE THEATRE	21
APPENDIX	22

Introduction

The following document outlines the technical specifications and plans for the Albert Hall Theatre, Llandrindod Wells. The Albert Hall Management Committee does not guarantee that all or any of these facilities or equipment will be available or suitable for the purposes of the visiting company. A visiting company should in all cases, check with The Albert Hall's Programming Manager to ensure this information is up to date and correct. At certain times some equipment detailed in this document may be temporarily unavailable.

For more information, or should you have any queries, please contact The Albert Hall Programming Manager and Technical Manager:

Ben Williams

Email: programming@thealberthall.co.uk / technical@thealberthall.co.uk

Phone: 0300 102 4255 - Option 2 or 6

Web: <https://thealberthall.co.uk/programming/>
<https://thealberthall.co.uk/technical>

Please Note: The Albert Hall cannot be held responsible for any costs incurred resulting in information, assumptions or omissions from this document. It is the responsibility of the visiting company to check critical dimensions, in person, before commissioning scenery. Please check the availability of equipment, and facilities before planning productions around it.

Seating Capacity

Stalls	241
Circle	211
Wheelchair Spaces	4
Total	456
Kills (Tech Desk)	-5
Total Sellable	451

If you require seats to be held off sale, you must notify us as far in advance as possible. We may not be able to hold seats once they are on sale.

(See Appendix A for the Seating Plan).

Access

The Albert Hall has no official loading bay. Access to the stage is via a small alleyway to the left side of the theatre – between the theatre and the church. Therefore, vehicles are to be parked at the front of the building for unloading please. Two sets of double doors, open onto the alleyway, one located at the rear of the auditorium, and the other located in the stage right wing area. Level access is available to the auditorium, however all scenery and equipment, will need to be carried up 4 steps onto the stage. There is then an additional 3 steps into the dressing rooms.

Unfortunately, due to the nature of the building, no backstage areas of the theatre have level, or disabled access.

Parking

We will do our best, but we cannot guarantee any parking here at The Albert Hall.

There is a small car park adjacent to the theatre, which is owned and used by the local authority offices. If there is a space, you may park there.

On Street Parking is available just up the hill, from the Theatre, however it is limited, and time restricted.

For peace of mind, we recommend you use the [Local Authority Pay and Display Car Park](#), on [High Street \(LD1 6BG\)](#), a short walk away from the theatre.

Please note: The Albert Hall cannot take responsibility for any parking fines or fees, arising from visiting company vehicles, and vehicles are parked at your own risk.

Stage Information and Dimensions

Stage

Type of Stage: Proscenium

Rake: No

Surface: Black MDF

Stage Fixing: No drilling or fixing allowed. Stage weights only.

Proscenium

Size of Proscenium:

Maximum Width: 7.68m

Depth (Front of Proscenium to Setting Line): 0.65m

Height: 5.00m

Height to bottom of Red Pelmet (Non Removable): 4.24m

Apron

Size of Apron:

US Maximum Width: 9.34m

DS Maximum Width: 4.93m

Depth: 1.85m

Height of Apron from House Floor: 1.00m

Setting Line

Setting line to front of proscenium: 0.65m

Setting line to front edge of stage: 2.50m

Setting line to rear wall: Maximum of 5.21m

Height

Height of Grid: 5m

Wing Height: 2.4m

Traps

Traps: None

Stage Access

Access to stage is down an external alleyway on Stage R.

Width of alleyway: 0.985m

Double door access: 1.5m wide by 2m high

The stage is then 4 steps up from the alleyway.

There is no loading bay, or dock. Vans to be parked outside the front doors, and equipment, set, etc, brought in through the alleyway.

Backstage Layout and Stage Plan:

See Appendix B for Backstage Layout, and the Stage Plan can be found on the [Technical Page](#) on our website.

Flying System

Flying Type: 4 x Manually Hauled Hemp Sets (1 Additional, but not presently useable)

Weight Limit: 50kg per Hemp Set – Uniformly distributed.

Barrel (pipe) diameter: 50mm

Barrel length: 7.2m

Spacing between sets: TBC

Please Note: We do not have the ability to fly persons on our rigging.

Drapery (Curtains)

House Tabs

Manually Operated (Stage L)

Red - horizontally opening tabs – FIXED (not available to be taken down)

Secondary Tabs

Manually Operated (Stage R)

Yellow – horizontally opening tabs – FIXED (not available to be taken down)

Cyclorama (Cyc.)

Black flown on HS1 as standard – Can be removed for another drape, or moved onto another hemp set.

Masking

HS3: Black Border (1.2m drop) & Black Legs (1.4m width) as standard - Can be removed, or moved onto other hemp sets.

Additional Drapes Available (Upon Request)

- 1 x White Cyclorama (4m drop)
- 2 x Black Legs (1.4m width)
- 1 x Black Border (1.2m drop)
- 2 x White Voiles (1m width)
- 1 x The Albert Hall Banner (5m drop x 2m width) – **Limited Use Only**

Stage Equipment Available:

- 10 x 12.5kg Stage Weights
- Various Clamps
- Curtain Clips and Ties

Stage Management Facilities

Prompt corner position: No Set Position

FOH call facilities: Duty Technician will be in contact with both FOH on radio, and Backstage/Tech crew on Comms

Cue-Lights: None

Bar Bells: None

First Aid Box: Stage Right

Stage Power

Upstage Right

- 2 x Double 240V 13A Sockets

Upstage Left

- 2 x Double 240V 13A Sockets

Downstage Left

- 1 x Double 240V 13A Sockets

Downstage Right

- 2 x Double 240V 13A Sockets
- 2 x Single Phase 240V 63A Sockets
(**Please Note:** these are not rated at 63A)

Additional Power Options

- 13A Extension Cables
- Limited number of 13A to 16A Convertors
- Limited number of 15A (Lighting – Round Pin) to 16A Convertors
- Limited number of 13A to 15A (Lighting – Round Pin) Convertors

Accommodation

Dressing Rooms

We have 4 Dressing Rooms.

Dressing Room 1 is recommended for up to 5 cast members, and is located up 3 steps from the stage right wing.

Dressing Room 2, is recommended for up to 8 cast members.

Dressing Room 3 is recommended for up to 5 cast members.

Dressing Room 4 is our largest dressing room, recommended for up to 10 cast members.

Dressing Rooms 2, 3, & 4 are located up 3 steps from the stage and are along a back of stage corridor, so can be accessed from either side.

Each Dressing Room contains:

- Mirrors
- Chairs
- Surfaces
- WIFI

In addition, Dressing Rooms 1 & 2 feature a toilet, and sink, as well as 13a sockets. At present, 3 & 4 do not have sockets, however we can run some extension leads if required.

We do not have showers on site.

For pictures of the Dressing Rooms, please see Appendix C

Wardrobe and Wig Facilities

We have an Iron and Ironing Board available to use.

No further wardrobe and wig facilities are available.

Laundry Facilities

None on site, however the nearest is available at:

- [Ascona Texaco – ‘Crossgates’ Service Station](#)

Crossgates, Llandrindod Wells, Powys, LD1 6RE

Opening Times:

Monday to Saturday: 6am to 10pm

Sunday: 7:30am–9pm

- [MFG Texaco – Builth Wells Fuel Station](#)

Station Road, Builth Wells, Powys, LD2 3SS

Opening Times:

Monday to Sunday: 24 Hours

- [Rhayader Laundry Services](#)

East Street, Rhayader, Powys, LD6 5DN

Opening Times:

Monday to Sunday: 8am to 9pm

Kitchen Facilities:

There is a Small Kitchen located within The Lesser Hall, in the basement (-1) which contains:

- Microwave
- Tea/Coffee making facilities
- Washing up facilities

PLEASE NOTE: There are no cooking facilities on site.

Lighting

The Albert Hall now runs a complete rig of LED Lighting Fixtures. Therefore, we no longer have dimming facilities, so if you wish to bring an old style fixture, you will also need to bring a Dimmer Pack which will accept a DMX Feed.

As all lighting is either RGB, RGBW, or RGBAL, we no longer keep stock of any Gels and do not have capability to put any Gels into the fixtures. The colour mixing of the LEDs allows us to generate the colours you require.

The Albert Hall's Lighting System is now only to be used by our Technicians, paid at the rate specified in the [Scale of Charges](#).

Lanterns in fixed rig:

FOH Follow Spot Perch (Each Side):

- 2 x Zoom Profile Spots
- 1 x Moving Head Hybrid
- 1 x Gobo Zoom Profile Spot (**Fitted and Focussed with venue logo gobo**)

FOH Booms (Each Side):

- 1 x Junior Zoom Profile Spot
- 1 x Moving Head Hybrid
- 2 x Zoom Profile Spots

Overhead LX1:

- 4 x Zoom Fresnel
- 4 x Zoom Par Can
- 2 x Moving Head Zoom Wash
- 2 x Moving Head Hybrid

Overhead LX2:

- 2 x Zoom Fresnel
- 2 x Zoom Par Can
- 4 x Moving Head Hybrid

Overhead LX3:

- 2 x Zoom Fresnel
- 4 x Cyc Lighters

Followspots:

- 2 x LEDJ FS300 LED Followspot (Located on Followspot Perches in the Circle) – **Operators must be 16 years or older.**

Additional Fixtures and Special Effects:

We have the following additional fixtures and special effects available. Advanced notification is required as we will need to collect these from our stores, and bring to the venue.

- 2 x Moving Head Hybrid
- 6 x RGBW Par Cans
- 2 x Moving Head Zoom Wash
- 8 x RGB Batten
- 1 x LED Strobe
- 2 x UV Fluorescents
- 2 x Hazers
- 1 x Starburst (Modern Mirrorball)

Further Fixtures and Effects (inc. Smoke, Confetti Cannons, Bubble, Bubble Haze Effects) are available from our friends at BRGW Technical – brgw.co.uk

Rigging Equipment:

- 1 x Zarges (**TAH Use Only**)
- 1 x 2 Piece Ladder
- 1 x Mini Step Ladder

Control:

We have a Digital Desk with 8 universe capability (Fixed Rig runs on 3 universes) which will **only be** operated by our technicians, either from the Tech Booth or Work Station at rear of Stalls.

House Lights:

Our LED house lights are operated either by DMX through our lighting desk.

Lighting Power

The lighting rig is powered separately to the other sockets around the stage. We also have capability to provide 15A (Rated at 6a per circuit) hot power (non-dimmable) to downstage right. This can be used for lighting fixtures or special effects of your own, if required.

Please Note: Items are plugged into our lighting system at your own risk. We cannot be held responsible for any damage or malfunction caused to your equipment.

Lighting Documents:

Additional lighting documents can be found on our website, on the page where you found this document.

Sound

Local Productions

We are usually able to provide an engineered system in house. Please contact our technical manager for a discussion on what we can offer.

Alternatively, you can use your own PA System and Engineer.

Commercial & Professional Hire

Whilst we have an in-house PA system that is available for an additional fee, it is highly advised that commercial & professional touring shows bring their own PA System, to ensure it meets the show's specific requirements. Additionally, even if you are using our PA system, **you are required to bring your own mixing desk, cabling, etc.**

In-House PA:

- 4 x 15" Active Top Cabs
- 2 x 15" Active Bass Bins
- 2 x 8" Active Top Cabs, as fills for rear alcoves.
- 1 x CAT-6 link from front of house to backstage.

System is configured in stereo (L&R) requiring a Left and Right XLR connection. The system is processed by the bass bin.

Preferred Engineers

If you're not bringing your own PA system and engineer, and we cannot assist ourselves, we can connect you with a few trusted companies who already know our venue and its technical setup. Our preferred sound engineering partners include:

ABacoustics Ltd

<https://abacoustics.co.uk/>

01443 440404

hire@abacoustics.co.uk

AP Stage Solutions

<https://www.apstagesolutions.co.uk/>

07810 008463

Alistair@apstagesolutions.co.uk

Prestige Sound

<https://www.prestigesound.co.uk/>

07312 269125

foh@prestigesound.co.uk

TB Audio Solutions

07411 099121

info@tbaudiosolutions.co.uk

Projection

We have a full-size, motorised rear-projection screen measuring 7.5m x 4m, which spans the entire stage, accompanied by a laser projector, and is ideal for film screenings, presentations, bingo nights, and more.

We also have a short-throw projector capable of projecting backdrops and other visual content during shows.

Connection to our projection systems is via HDMI, usually from backstage.

Band Facilities

Pit Size: Variable – MAX: 4m x 1.8m

Band Rooms: None specifically – If you need dedicated accommodation, then you could use a dressing room

Music Stands: None

Chairs: approx. 30

Comms (Cans)

Equipment:

Comms unit with 5 belt pack devices

Location:

Main Unit: Stage right wing area (Headset for stage manager)

Belt packs: 2 in Tech Booth, 1 stage left wing area, 1 each for follow spots.

(The belt packs are not fixed, and can be moved around if necessary)

Relay System:

NOT CURRENTLY SET UP

Camera System:

We have a PTZ Camera fitted at the rear of the auditorium, with capability to record productions, at extra cost.

Rigging

As taken from the Terms and Conditions of Hiring:

No rigging, or de-rigging is to take place onto any of The Albert Hall rig without prior authorisation of the Chairperson, or Technical Manager. Any rigging that takes place, will need to be done in accordance with the ABTT's Technical Standards for Places of Entertainment, with the Chairperson, or Technical Manager present. Should any rigging take place without prior authorisation, without the above person/s present, or if it does not comply with the standards, The Albert Hall reserves the right to remove the rigged items, make adjustments to rigged items, or postpone a booking until the matters are resolved. Any costs incurred, will be the responsibility of the hirer.

Finding the Theatre

Address:

The Albert Hall,
Ithon Road,
Llandrindod Wells,
Powys
LD1 6AS

What3Words: Closes.Modem.Mainland

Directions:

From the North:

Follow the A483 into Llandrindod Wells. Continue past the Metropole Hotel on your left. You will come to a mini roundabout with the Automobile Palace (Tom Norton Limited) building ahead to your left. Turn right at the roundabout and head up Spa Road (A4081). Continue past the Commodore Hotel, over the railway bridge. Bear left, until you reach the roundabout. At the roundabout, take the 2nd exit onto Ithon Road, continuing to follow the A4081. The Albert Hall is approximately 50m from the roundabout, on the left.

From the South:

Follow the A483 into Llandrindod Wells. You will see the Automobile Palace (Tom Norton Limited) on your right, turn left at the mini roundabout, and head up Spa Road (A4081). Continue past the Commodore Hotel, over the railway bridge. Bear left, until you reach the roundabout. At the roundabout, take the 2nd exit onto Ithon Road, continuing to follow the A4081. The Albert Hall is approximately 50m from the roundabout, on the left.


From the West:

Follow the A4081 into Llandrindod Wells. Bear right after the river bridge. Continue on this road, past the cemetery, housing estate, and all-weather pitch on the left. Follow the road around to the left, and up the hill. The Albert Hall is on the right, before you reach the roundabout.

Appendix

Appendix A:


Seating Plan – PDF available on our [Technical page](#).



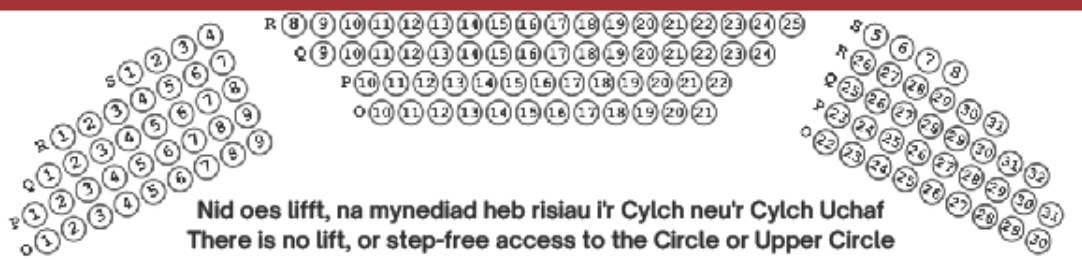
Neuadd Albert Landrifindod **The Albert Hall** Llanorindod, Wyls

Cynllun Seddi | Seating Plan

Cylch Uchaf | Upper Circle




Cylch | Circle




Nid oes lifft, na mynediad heb risiau i'r Cylch neu'r Cylch Uchaf
There is no lift, or step-free access to the Circle or Upper Circle

Uwch Seddi'r Llawr | Raised Stalls



Seddi | Stalls



LLWYFAN | STAGE

Llawr Gwaelod | Ground Floor (240) - Seddi | Stalls: 192 **Uwch Seddi'r Llawr | Raised Stalls: 44**
Gofod Cadair Olwyn | Wheelchair Spaces: 4
Llawr Cyntaf | First Floor (211) - Cylch | Circle: 132 **Cylch Uchaf | Upper Circle: 79**

Elusen Cofrestredig | Registered Charity: 1208974

Note: C191, E191, G191, H191 are allocated Wheelchair spaces. These are in the alleyway, so could potentially also go the other side of the walkway, next to seat 20.

Appendix B:

Backstage Layout Plan

Currently being generated.

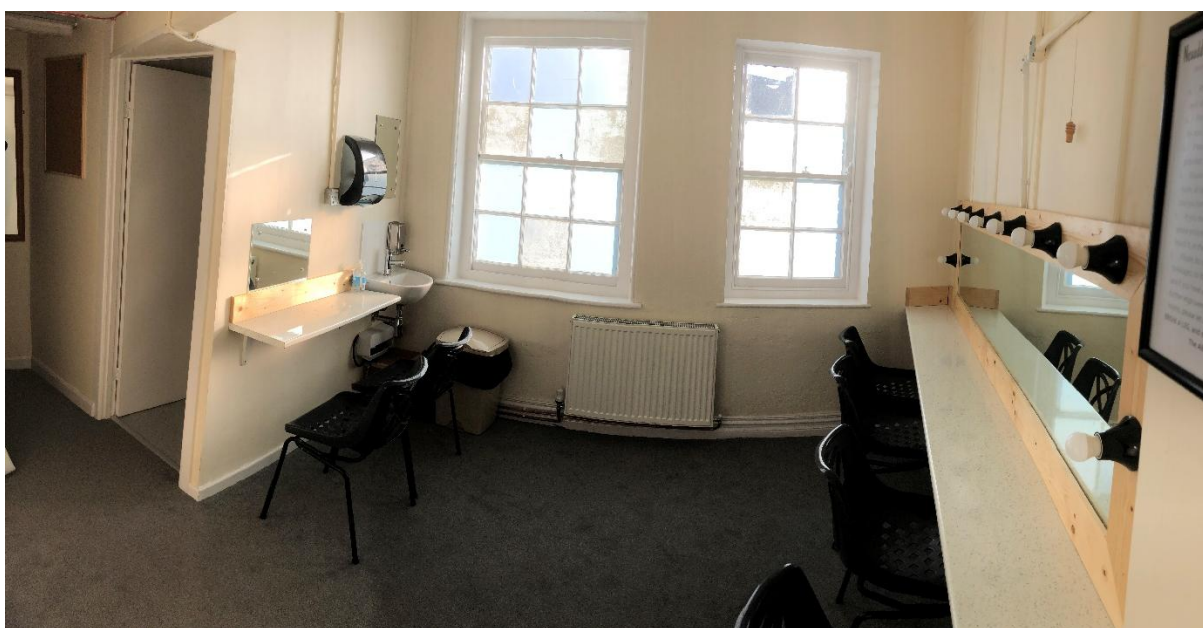
Not to Scale

This is a basic plan to show the layout of the backstage area of the building, For a detailed stage plan, with measurements, please see our [Stage Plan](#) found on our [Technical Page](#).

Appendix C: Dressing Room Pictures



Dressing Room 1



Dressing Room 2